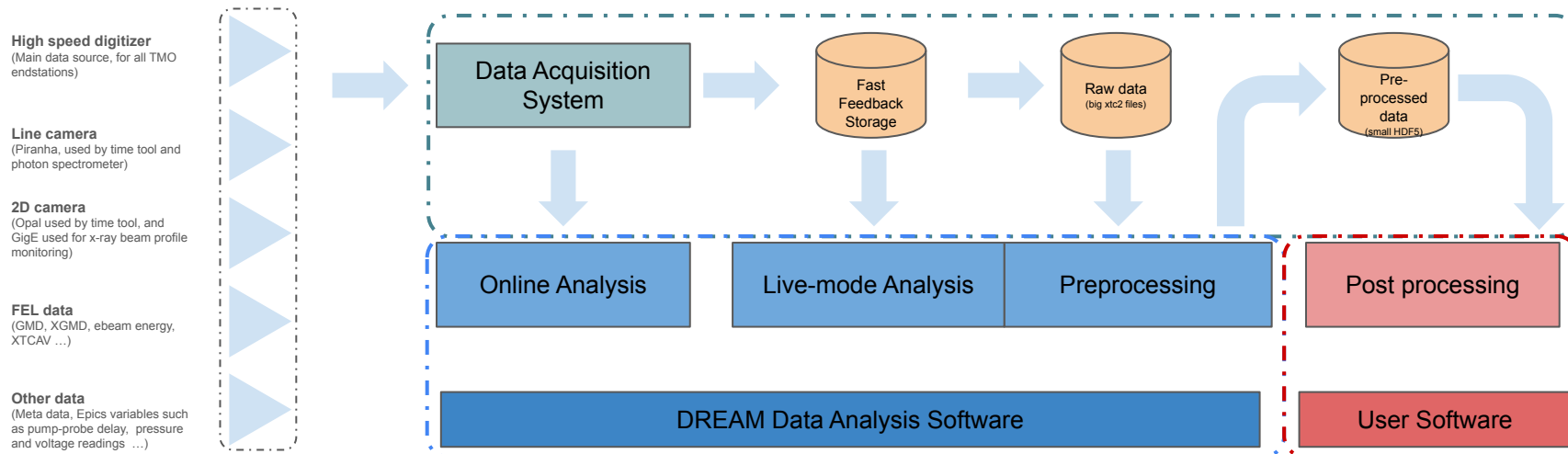


# DREAM Data Analysis Framework

Xiang Li, LCLS AMOS and Data Systems

# DREAM Data Pipeline



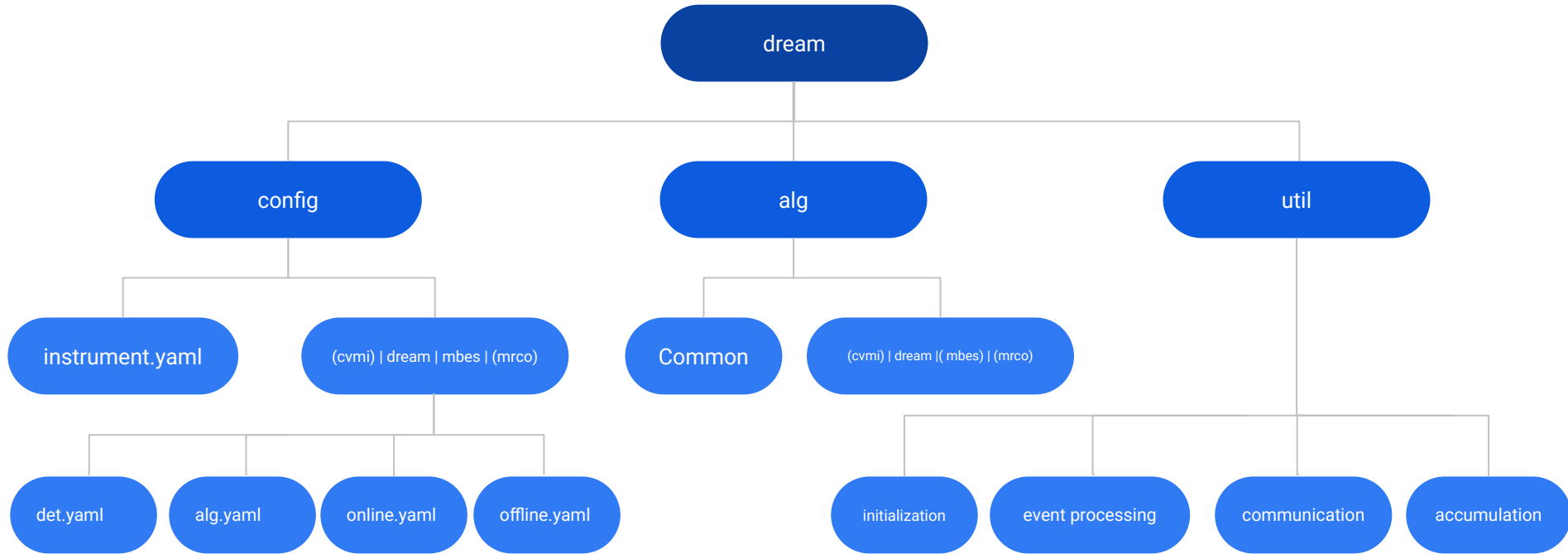
# DREAM Data Analysis Software - Features

---

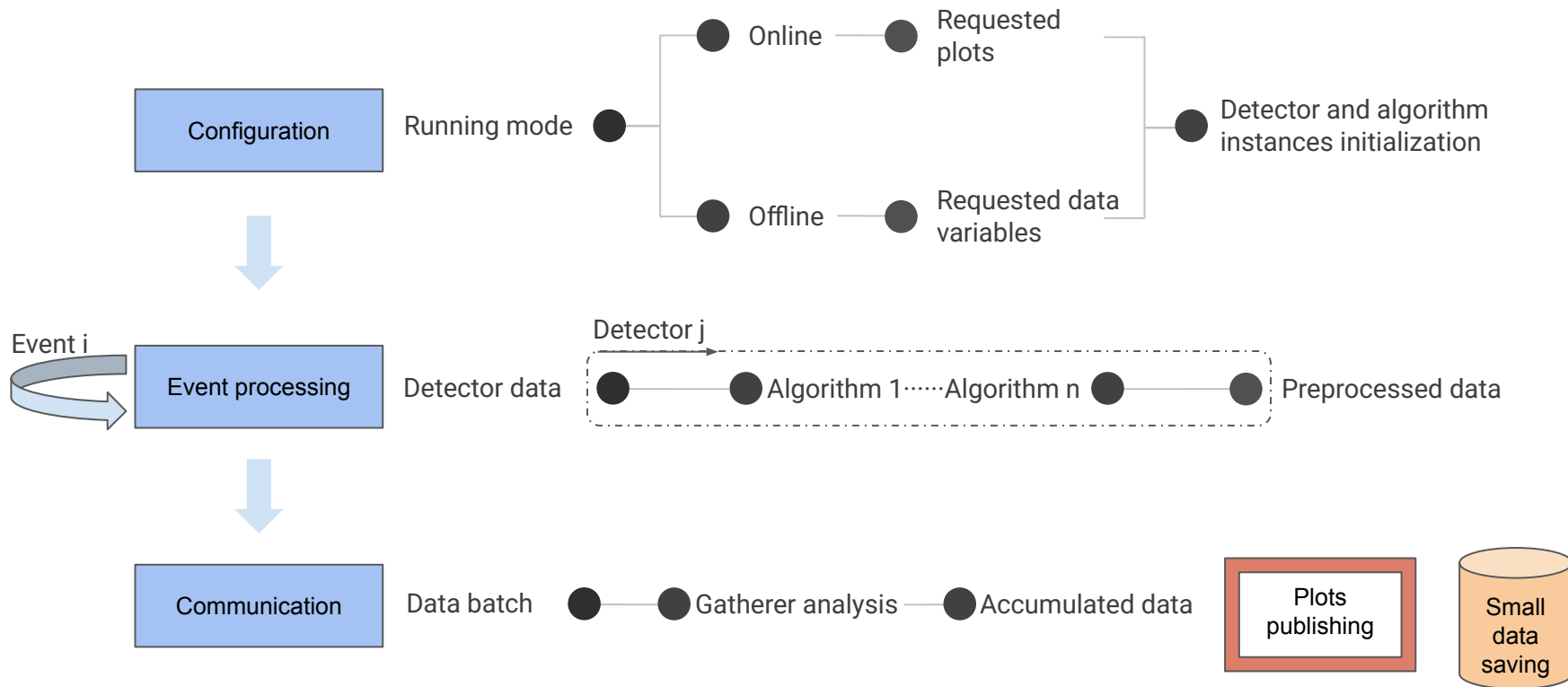
- Preprocessing framework for the DREAM endstation and beyond
- Capable of running both online and offline
- Analysis configurable with human-readable files
- Plots-driven analysis for online, and h5-content-driven for offline

# DREAM Data Analysis Software - Structure

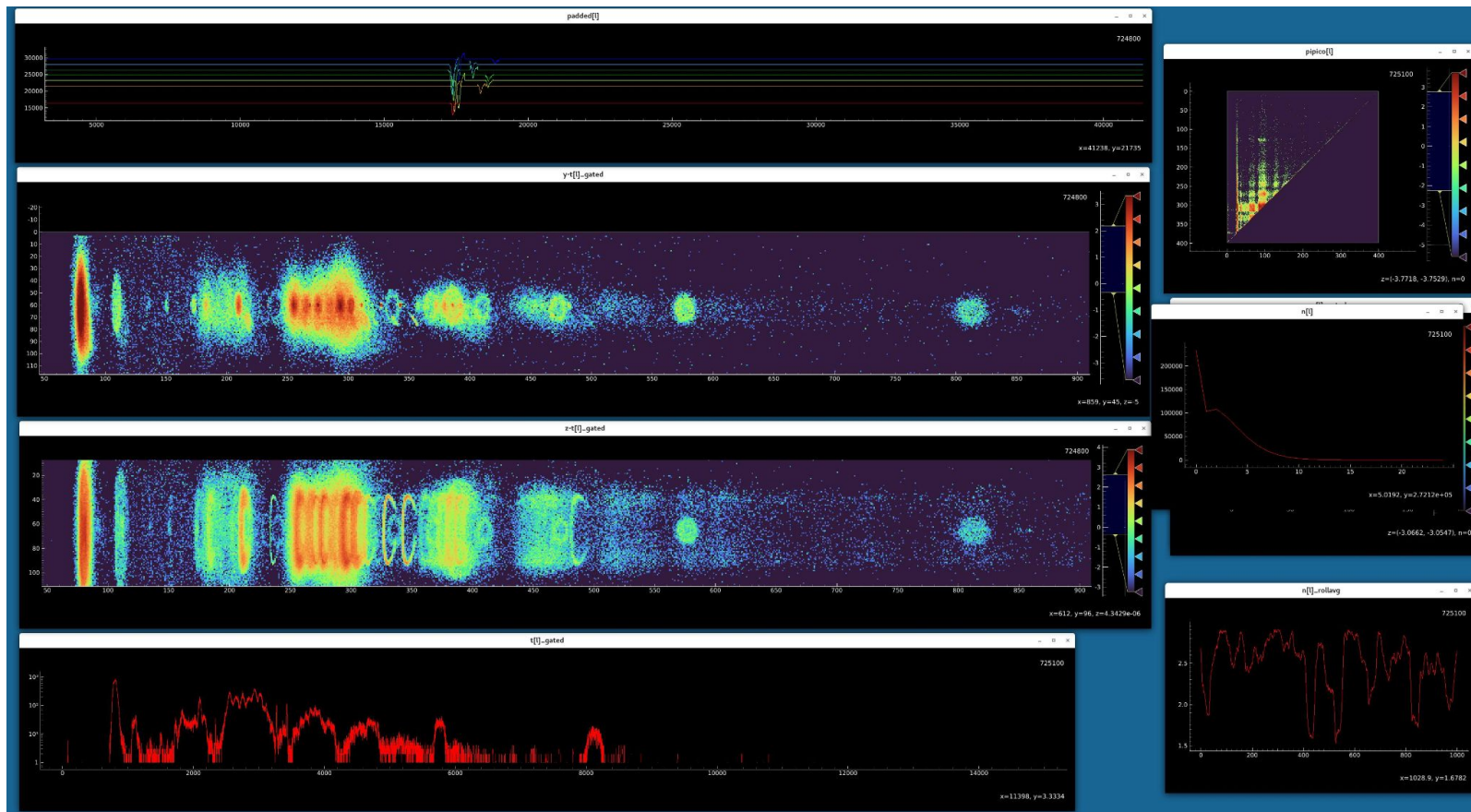
---



# DREAM Data Analysis Software - Workflow



# Online plots from DREAM early science experiment



# First release

github.com/slac-lcls/dream\_ana

slac-lcls / dream\_ana

Q Type to search

<> Code

Issues

Pull requests

Actions


Projects

Wiki

Security

Insights

Settings

 **dream\_ana** Public

Edit Pins

Watch 0

Fork 0

Star 0

main

1 Branch


1 Tag

Go to file

Add file

<> Code

About

 **Xiang Li** update worker config d06be96 · 15 minutes ago 13 Commits

dream	update worker config	15 minutes ago
README.md	Update README.md	34 minutes ago
install.sh	update install.sh	2 hours ago
pyproject.toml	initial commit	3 weeks ago
setup.py	update install.sh	2 hours ago
uninstall.sh	initial commit	3 weeks ago

README

## dream\_ana

Online and offline analysis software for the DREAM instrument at the LCLS.

Online and offline analysis software for the DREAM instrument at the LCLS.

Readme

Activity

Custom properties

0 stars

0 watching

0 forks

Report repository

Releases 1

v1.0.0

Latest

9 minutes ago

Packages

No packages published

[Publish your first package](#)